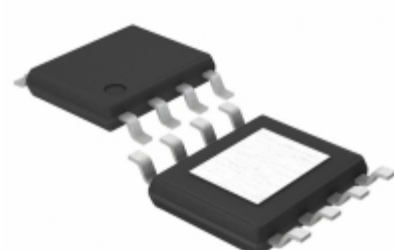


## BD9E302EFJ-E2



**Part Number:** [BD9E302EFJ-E2](#)  
**Manufacturer:** [LAPIS Semiconductor](#)  
**Description:** IC REG BUCK ADJ 3A SYNC  
**Data sheet:** [HTSOP-J8 Taping Spec](#)  
[BD9E302EFJ](#)

**RoHS Status:** Lead free / RoHS Compliant  
**Ship From:** Hong Kong  
**Shipment Way:** DHL/Fedex/TNT/UPS/EMS

Images are for reference only.  
 See Product Specifications for product details.  
**Buy BD9E302EFJ-E2 with confidence from Component-World.HK, 1 Year Warranty**

[Request For Quotation](#)

### PRODUCT PARAMETER

<b>Part Number</b>	BD9E302EFJ-E2	<b>Manufacturer</b>	<a href="#">LAPIS Semiconductor</a>
<b>Description</b>	IC REG BUCK ADJ 3A SYNC	<b>Lead Free Status / RoHS Status</b>	Lead free / RoHS Compliant
<b>Quantity Available</b>	143163 pcs	<b>Data sheet</b>	<a href="#">HTSOP-J8 Taping Spec</a> <a href="#">BD9E302EFJ</a>
<b>Category</b>	<a href="#">Integrated Circuits (ICs)</a>	<b>Voltage - Output (Min/Fixed)</b>	1V
<b>Voltage - Output (Max)</b>	19.6V	<b>Voltage - Input (Min)</b>	7V
<b>Voltage - Input (Max)</b>	28V	<b>Topology</b>	Buck
<b>Synchronous Rectifier</b>	Yes	<b>Supplier Device Package</b>	8-HTSOP-J
<b>Series</b>	-	<b>Packaging</b>	Tape & Reel (TR)
<b>Package / Case</b>	8-SOIC (0.154", 3.90mm Width) Exposed Pad	<b>Output Type</b>	Adjustable
<b>Output Configuration</b>	Positive	<b>Other Names</b>	BD9E302EFJ-E2TR
<b>Operating Temperature</b>	-40°C ~ 85°C (TA)	<b>Number of Outputs</b>	1
<b>Mounting Type</b>	Surface Mount	<b>Moisture Sensitivity Level (MSL)</b>	1 (Unlimited)
<b>Manufacturer Standard Lead Time</b>	17 Weeks	<b>Lead Free Status / RoHS Status</b>	Lead free / RoHS Compliant
<b>Function</b>	Step-Down	<b>Frequency - Switching</b>	550kHz
<b>Detailed Description</b>	Buck Switching Regulator IC Positive Adjustable 1V 1 Output 3A 8-SOIC (0.154", 3.90mm Width) Exposed Pad	<b>Current - Output</b>	3A

Component-World.com is a Reliable Stocking Distributor of Electronic Components. We specialize in all LAPIS Semiconductor series electronic components. We have 143163 pieces of LAPIS Semiconductor BD9E302EFJ-E2 in stock available now. Request a quote from electronics components distributor at Component-World.com, our sales team will contact you within 24 hours.  
 RFQ Email: [info@Components-World.com](mailto:info@Components-World.com)

### RELATED PRODUCTS

	<b>Part#:</b> <a href="#">BD9E303EFJ-LBE2</a> <b>Description:</b> IC REG BUCK ADJ 3A SYNC 8HTSOP	<b>Manufacturers:</b> <a href="#">LAPIS Semiconductor</a>	<a href="#">RFQ</a>
	<b>Part#:</b> <a href="#">BD9E303EFJ-LBH2</a> <b>Description:</b> 7.0V TO 36V INPUT, 3.0A INTEGRAT	<b>Manufacturers:</b> <a href="#">LAPIS Semiconductor</a>	<a href="#">RFQ</a>
	<b>Part#:</b> <a href="#">BD9E303EFJ-EVK-001</a> <b>Description:</b> BD9E303EFJ EVALUATION BOARD	<b>Manufacturers:</b> <a href="#">LAPIS Semiconductor</a>	<a href="#">RFQ</a>
	<b>Part#:</b> <a href="#">BD9G101G-EVK-101</a> <b>Description:</b> BOARD EVAL FOR BD9G101G	<b>Manufacturers:</b> <a href="#">LAPIS Semiconductor</a>	<a href="#">RFQ</a>
	<b>Part#:</b> <a href="#">BD9G102G-LBTR</a> <b>Description:</b> INDUSTRIALINTEGRATED FETBUCKNONS	<b>Manufacturers:</b> <a href="#">LAPIS Semiconductor</a>	<a href="#">RFQ</a>
	<b>Part#:</b> <a href="#">BD9G101G-TR</a> <b>Description:</b> IC REG BUCK ADJ 0.5A 6SSOP	<b>Manufacturers:</b> <a href="#">LAPIS Semiconductor</a>	<a href="#">RFQ</a>
	<b>Part#:</b> <a href="#">BD9E103FJ-E2</a> <b>Description:</b> STANDARDINTEGRATED FETBUCKSYNCHR	<b>Manufacturers:</b> <a href="#">LAPIS Semiconductor</a>	<a href="#">RFQ</a>
	<b>Part#:</b> <a href="#">BD9G201EFJ-ME2</a> <b>Description:</b> AUTOMOTIVEINTEGRATED FETBUCKNONS	<b>Manufacturers:</b> <a href="#">LAPIS Semiconductor</a>	<a href="#">RFQ</a>
	<b>Part#:</b> <a href="#">BD9E300EFJ-LBH2</a> <b>Description:</b> 7.0V TO 36V INPUT, 2.5A INTEGRAT	<b>Manufacturers:</b> <a href="#">LAPIS Semiconductor</a>	<a href="#">RFQ</a>
	<b>Part#:</b> <a href="#">BD9E300EFJ-EVK-001</a> <b>Description:</b> EVAL BOARD BD9E300EFJ	<b>Manufacturers:</b> <a href="#">LAPIS Semiconductor</a>	<a href="#">RFQ</a>
	<b>Part#:</b> <a href="#">BD9E104FJ-E2</a> <b>Description:</b> 7.0 V TO 26.0 V INPUT, 1 A INTEG	<b>Manufacturers:</b> <a href="#">LAPIS Semiconductor</a>	<a href="#">RFQ</a>
	<b>Part#:</b> <a href="#">BD9E151NUX-TR</a> <b>Description:</b> IC REG BUCK ADJ 1.2A 8VSON	<b>Manufacturers:</b> <a href="#">LAPIS Semiconductor</a>	<a href="#">RFQ</a>
	<b>Part#:</b> <a href="#">BD9E301EFJ-LBH2</a> <b>Description:</b> 7.0V TO 36V INPUT, 2.5A INTEGRAT	<b>Manufacturers:</b> <a href="#">LAPIS Semiconductor</a>	<a href="#">RFQ</a>
	<b>Part#:</b> <a href="#">BD9G341AEFJ-LBE2</a> <b>Description:</b> 1CH BUCK CONVERTER, 12V-76V, 3A,	<b>Manufacturers:</b> <a href="#">LAPIS Semiconductor</a>	<a href="#">RFQ</a>
	<b>Part#:</b> <a href="#">BD9G341AEFJ-EVK-101</a> <b>Description:</b> EVAL BOARD BD9G341AEFJ-E2	<b>Manufacturers:</b> <a href="#">LAPIS Semiconductor</a>	<a href="#">RFQ</a>
	<b>Part#:</b> <a href="#">BD9E151NUX-EVK-101</a> <b>Description:</b> EVAL BOARD BD9E151NUX FET REG	<b>Manufacturers:</b> <a href="#">LAPIS Semiconductor</a>	<a href="#">RFQ</a>
	<b>Part#:</b> <a href="#">BD9E301EFJ-LBE2</a> <b>Description:</b> IC REG BUCK ADJ 2.5A SYNC 8HTSOP	<b>Manufacturers:</b> <a href="#">LAPIS Semiconductor</a>	<a href="#">RFQ</a>
	<b>Part#:</b> <a href="#">BD9G341AEFJ-E2</a> <b>Description:</b> IC REG BUCK ADJ 3A 8HTSOP	<b>Manufacturers:</b> <a href="#">LAPIS Semiconductor</a>	<a href="#">RFQ</a>
	<b>Part#:</b> <a href="#">BD9E300EFJ-LBE2</a> <b>Description:</b> IC REG BUCK ADJ 2.5A SYNC 8HTSOP	<b>Manufacturers:</b> <a href="#">LAPIS Semiconductor</a>	<a href="#">RFQ</a>
	<b>Part#:</b> <a href="#">BD9E301EFJ-EVK-001</a> <b>Description:</b> EVAL BOARD BD9E301EFJ	<b>Manufacturers:</b> <a href="#">LAPIS Semiconductor</a>	<a href="#">RFQ</a>

### Related keywords for BD9E302EFJ-E2

LAPIS Semiconductor BD9E302EFJ-E2	BD9E302EFJ-E2 distributor	BD9E302EFJ-E2 supplier	BD9E302EFJ-E2 price
BD9E302EFJ-E2 download datasheet	BD9E302EFJ-E2 datasheet	BD9E302EFJ-E2 stock	buy BD9E302EFJ-E2
LAPIS Semiconductor BD9E302EFJ-E2	Kionix Inc. BD9E302EFJ-E2	Rohm Semiconductor BD9E302EFJ-E2	